

Zombae Production Book

Elizabeth, Marlowe and Rachel

Index

- Page 2- Story
- Page 3- Shot List
- Page 4- Basic information about Images of animatic
- Page 5- Female References
- Page 6- Male References
- Page 7- Environment References
- Page 8- Female and Male Designs
- Page 9- Environment Layout
- Page 10- Models
- Page 11- Title Designs
- Page 12- First/Final Animatic Critique
- Page 13- Sources Used (Audio, Models, Textures)
- Page 14- Inspirations and style frames
- Page 15- Building Ideas/Sketches
- Page 16- End Credits Sketches
- Page 17- Watercolor Textures
- Page 18- Block-In Animation Critique and Overall Animation Critique
- Page 19- Who did what?
- Page 20-21- Sticker designs
- Page 22- End credits images who did what

Story

1. Girl on phone (full shot) on a dating app called Eternal Love
2. Restaurant door opens (bell rings)
3. Zombie appears and waves at girl
4. Zombie walks over and sits down at table
5. Zombie reaches his hand out to shake her hand
6. Girl looks at zombie and back to his profile
7. Shot shows her disgusted face towards him
8. Girl slams her hands on table and gets up
9. Shot shows zombie's reaction
10. Girl walks out restaurant
11. Shot shows outside of restaurant and shows girl walking out
12. Girl then walks across the street
13. Zombie opens up the door of the restaurant and looks at her frantically
14. Zombie hears something
15. Zombie turns his head towards the sound
16. Shot of truck driving down the street
17. Close up reaction of the truck rushing towards her
18. Zombie runs over to save her
19. Girl on ground
20. Rest of truck passes by her and reveals the zombie was runned over
21. Girl rushes over to him and helps stand him up
22. Zombie offers to shake her hand again
23. Girl shakes zombie's hand
24. Arm snaps off
25. End

Shot List

Shot 1: Title card

Shot 2: Establishing Shot, Restaurant Interior

Shot 3: Mid Shot, Over the shoulder Girl, Zombie enters restaurant.

Shot 4: Mid Shot, Zombie waves at Girl.

Shot 5: Mid Shot, Reaction of Girl.

Shot 6: Wide Shot, Zombie shambles to table.

Shot 7: POV Shot Girl, Zombie sits down.

Shot 8: Mid Shot, Zombie holds out hand.

Shot 9: Mid Shot, Girl looks at phone.

Shot 10: POV Shot Girl, Looks at app tilt up to Zombie.

Shot 11: Mid shot, Girl gets angry.

Shot 12: Close up, Girl's hands, Slams table and stands up.

Shot 13: Mid Shot, Reaction of Zombie.

Shot 14: Establishing Shot, Restaurant Exterior, Girl exits Restaurant followed by Zombie.

Shot 15: Mid Shot, Car comes closer while Girl crosses frame.

Shot 16: Wide Shot, Zombie pushes Girl out of the way, gets hit by Car.

Shot 17: Girl Gets Up

Shot 18: Wide Shot, Girl gets up and helps Zombie up. Girl extends hand to zombie. They hold hands and Zombie hand breaks off.

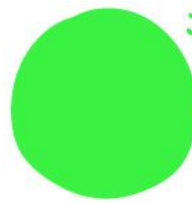
Naming Conventions for Images

- Act1_#
- Act2_#
- Act3_1pt_#
- Act3_2pt_#

Color Codes



#F488DE
Name: Girl Pink



#38F243
Name: Zombie Green



#E22342
Name: Truck Red

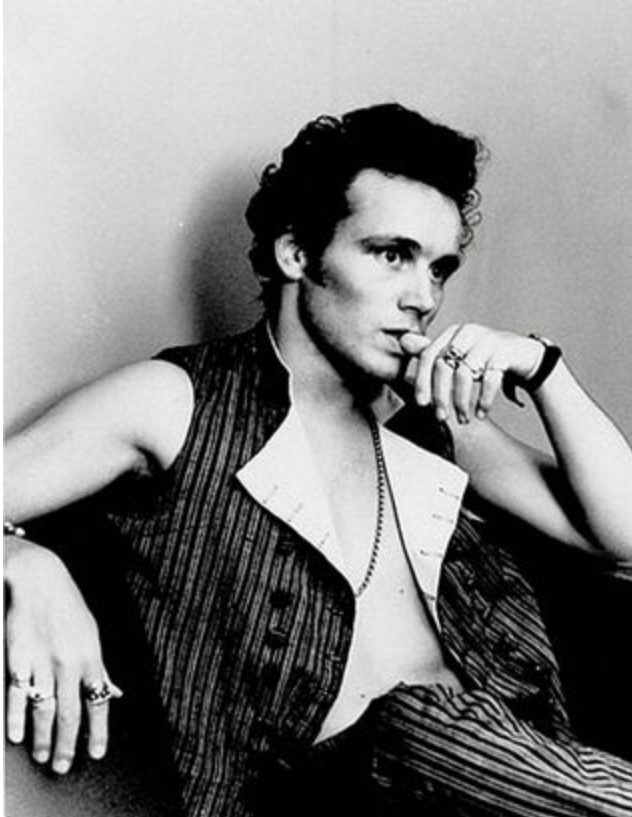


#B3B3B3
Name: Mid Grey

Female Reference



Male Reference

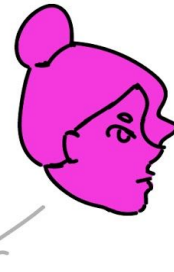
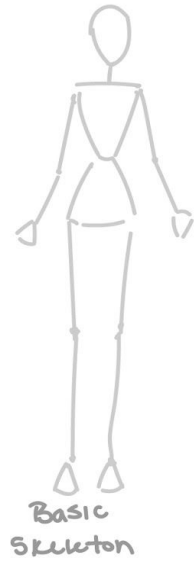


Environment Reference

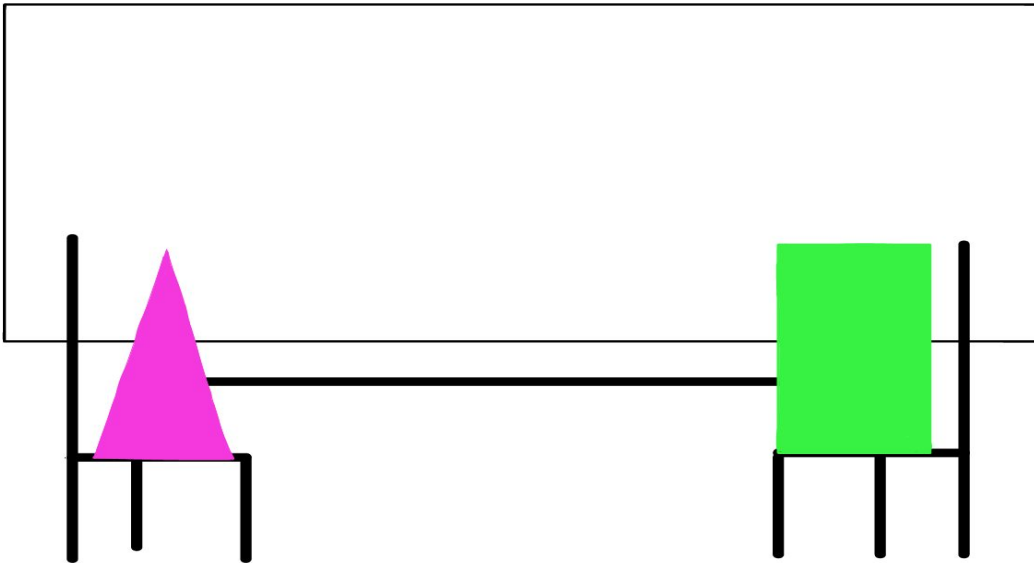


Female and Male Design

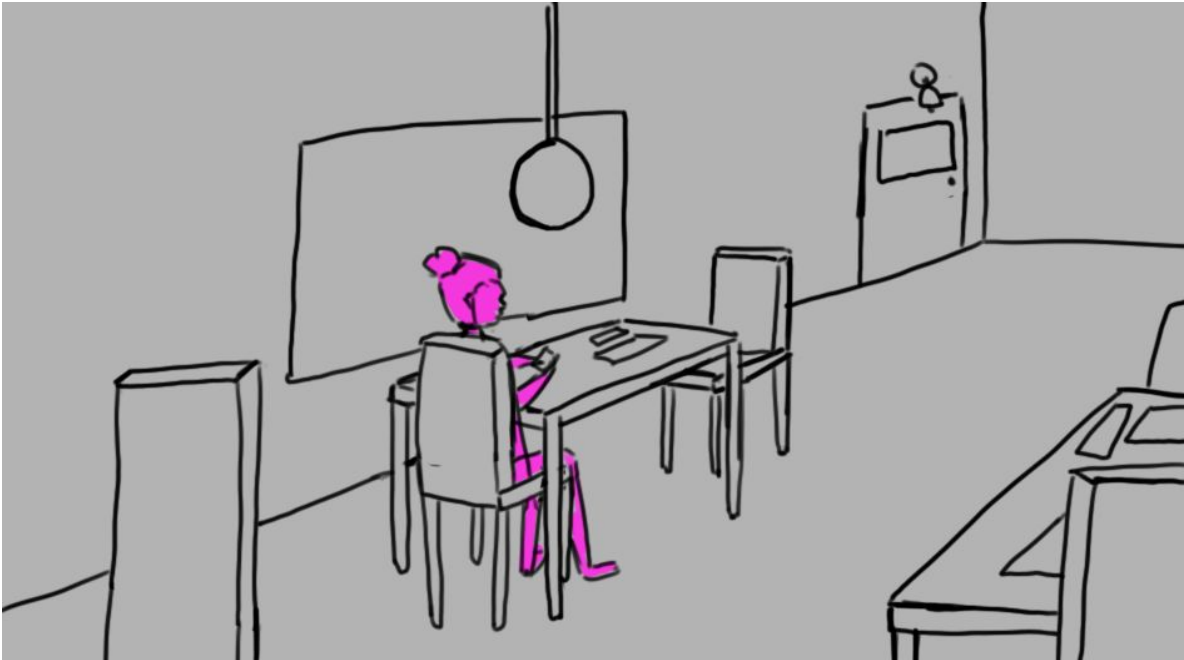
Girl (Rose)
First Draft



Environment Layout



The basic layout



Establishing Shot

Models



Title Designs

ZOOM hae

ZOOM Bae

First Animatic Critique

1. Explore the environment more
 - a. Move the camera around more
2. Create more drama/humor
 - a. Add in more anger at table slam make it more of a build up
 - b. The sound of the truck can be quicker, more fast pace and a tighter edit
 - c. The save from the truck needs to be quicker, more dramatic
3. Push the story at the end
4. Ending can be different
 - a. He could push her towards the truck and she can become a zombie
5. When zombie sits in chair, the same shot should pan down to the profile
 - a. Photo of him alive, not dead
 - b. Do handshake after she looks at his profile
6. When zombie walks in it's just a silhouette of him. Then he sits then we see his feet and then a pan up to his face. So more like a big reveal.
7. On his phone it's an old photo of him as a human when he was alive.

*Not much to change. Overall, must be more dramatic

**I noticed the audio wasn't as loud as I thought it would be plus it cuts off quicker than I thought. I'll try to fix that. -Liz

Final Animatic Critique

1. Silhouette of zombie at the door? (suggestion)

Sources Used

*Please update if you use audio, models, textures, etc. that aren't already on this list.

1. Audio

- a. soundbible.com/free-sound-effects-1.html
- b. <https://freesound.org/>

2. Models

- a. Zombie- from *Hotel Transylvania* by Sony:
 - i. <https://secure.sonypictures.com/animation/hotelt/zombierig/videosubmissions/>
- b. Girl- Mery Rig:
 - i. <https://www.meryproject.com/>
- c. Truck-
 - i. <https://www.cgtrader.com/free-3d-models/vehicle/bus/low-poly-bus-18444f26-1958-404b-9975-941b2cd0ce79>

3. Textures

- a. Hand painted watercolors by Rachel and Liz

4. Useful Sources That Aren't Used Yet

- a. Dave O'Reilly (Rigs)
- b. Animation Buffet (Rigs)
- c. BenSound (Music)

References and Style Frames

https://www.youtube.com/watch?v=_X_AfRk9F9w&list=LL0u9kxGXYDEq6h46kOVrxQg&index=42

Building Ideas/Sketches



End Credits Sketches



Watercolor Textures



Block-In Animation Critique

1. Have him holding a flower (possible dead) to give to her (suggestion)
 - a. Possibly have a dead flower on his side and an alive flower on her side on the table.
2. Remember to keep the table the same size. (Keep them both silhouetted in the window)
3. Overall it's really good and we're going in the right direction!

Animation Critique

1. Looks like the truck comes to a stop
 - a. Make it keep going right before she gets hit
2. Work the ending
 - a. She randomly appears and comes into frame
 - i. Don't leave frame shot 19
3. For table hit have her fist be less stiff
 - a. "Looks like Thor's fist" -Rutland

Who did what?

1. Story- Marlowe Liz and Rachel
2. Title design of Zombae- Liz
3. Hand Painted texture- Liz and Rachel

4. Animation of zombie- Marlowe
5. Animation of girl- Rachel
6. Modeling and Lighting- Liz

7. Compositing- Marlowe
8. Sound editing- Rachel and Marlowe

Sticker images

ZOOM Bar



